

Posiflex USB VCOM Driver Installing Guide

Introduction

The purpose of this application is to provide users of USB chips with a simple procedure for installing virtual COM drivers for our virtual COM devices under Windows XP and Win7 and Win8.

1. When you connect the USB cable of our virtual COM device to PC first time, you need to install this Virtual COM Port driver.
2. Now, please follow the installing steps below.

Installing Drivers

To install USB Display drivers under WinXP/Win7/Win8, follow the instructions below:

If a device of the same type has been installed on your machine before and the drivers that are about to be installed are different from those installed already, the original drivers need to be uninstalled. Please refer to the uninstall document for further details of this procedure.

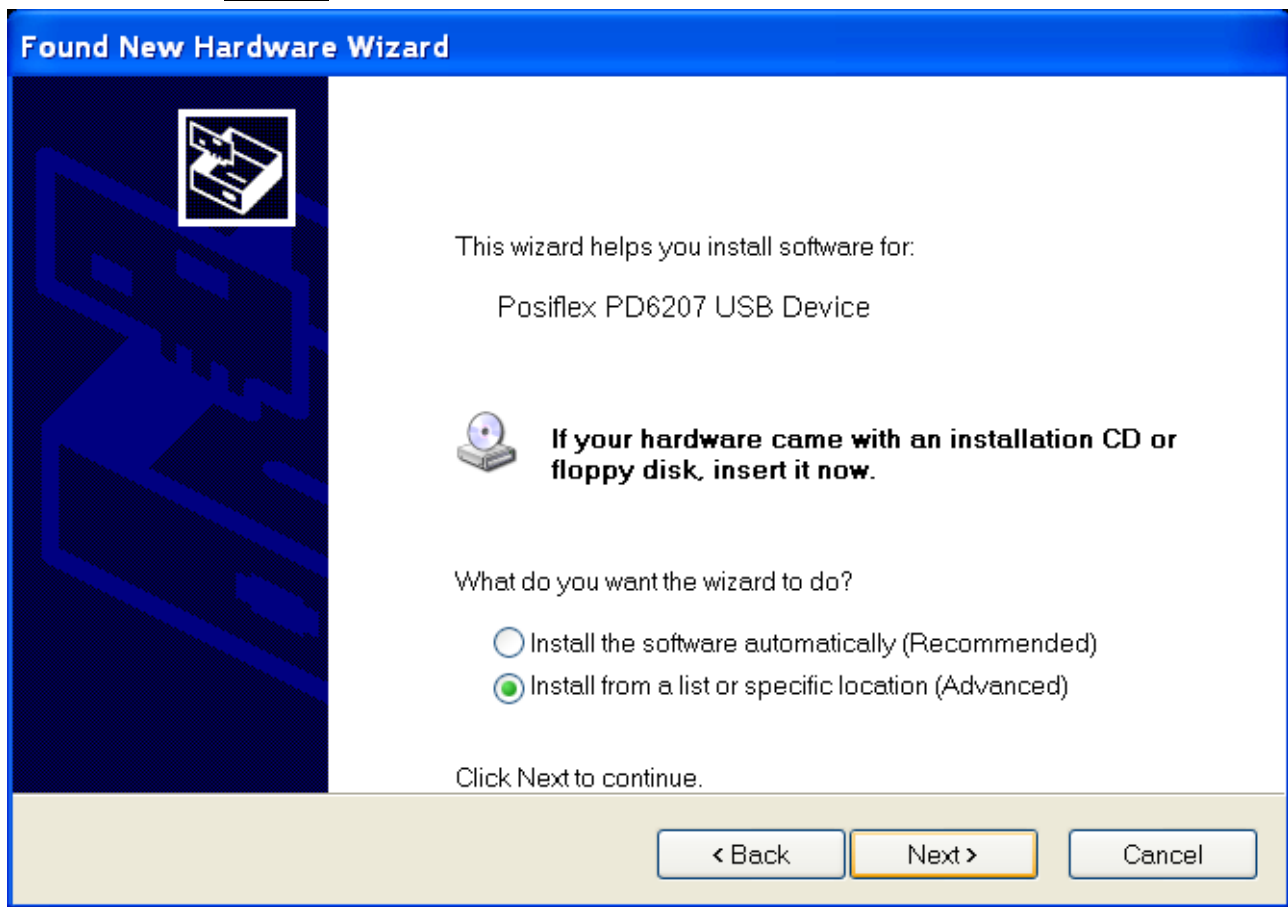
Installing Drivers under WinXP

The steps below are the examples for PD6207.

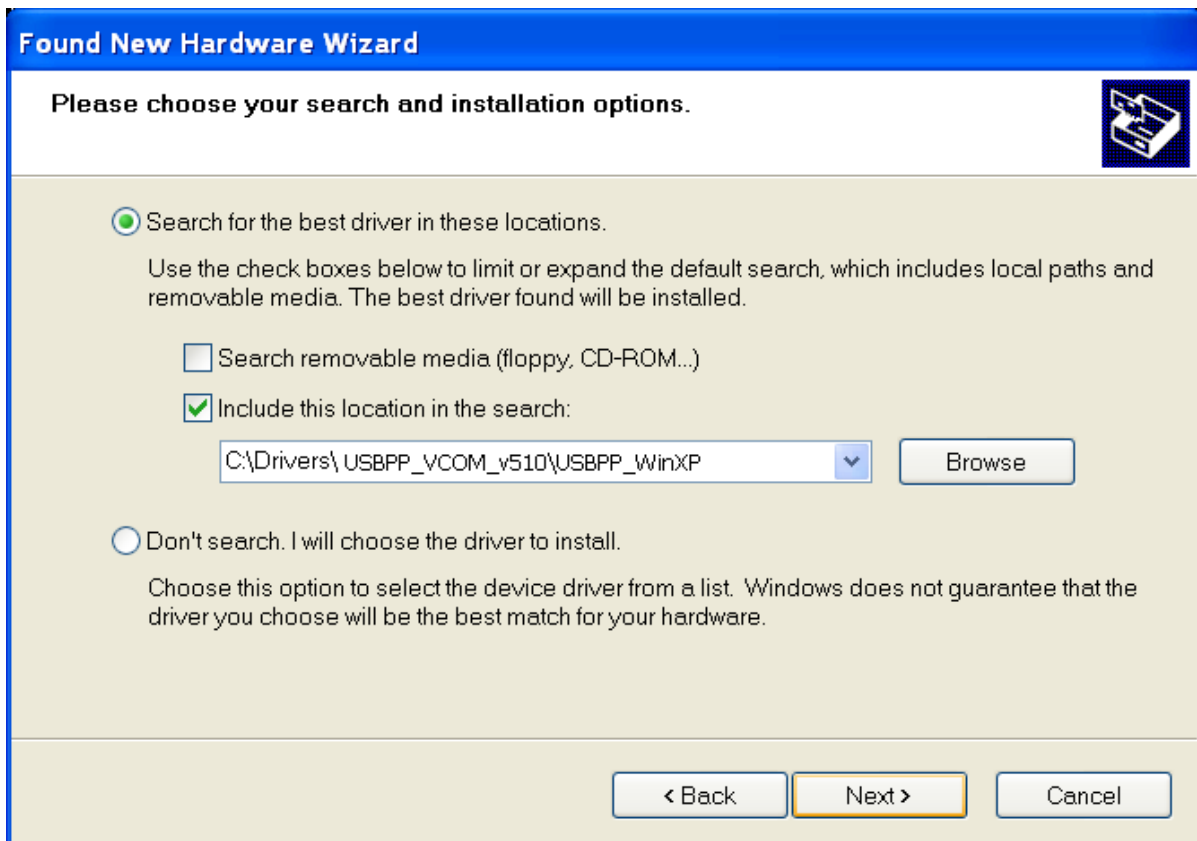
- Connect the device to a spare USB port on your PC. Select “No, not this time” from the options available and then click **Next** to proceed with the installation.



- Select "Install from a list or specific location (Advanced)" as shown below and then click **Next**.



- Select "Search for the best driver in these locations" and enter the file path in the combo-box ("E:\Drivers\ USBPP_VCOM_v510\USBPP_WinXP" in the example below) or browse to it by clicking the browse button. Once the file path has been entered in the box, click **Next** to proceed.



The screenshot shows the 'Found New Hardware Wizard' window. The title bar is blue with the text 'Found New Hardware Wizard'. Below the title bar, the text 'Please choose your search and installation options.' is displayed. To the right of this text is a small icon of a computer with a question mark. The main area of the window has a light beige background. There are two radio button options. The first option is 'Search for the best driver in these locations.' which is selected. Below this option is a paragraph of text: 'Use the check boxes below to limit or expand the default search, which includes local paths and removable media. The best driver found will be installed.' There are two checkboxes: 'Search removable media (floppy, CD-ROM...)' which is unchecked, and 'Include this location in the search:' which is checked. Below the checked checkbox is a text box containing the path 'C:\Drivers\ USBPP_VCOM_v510\USBPP_WinXP' and a 'Browse' button to its right. The second radio button option is 'Don't search. I will choose the driver to install.' which is unselected. Below this option is a paragraph of text: 'Choose this option to select the device driver from a list. Windows does not guarantee that the driver you choose will be the best match for your hardware.' At the bottom of the window are three buttons: '< Back', 'Next >', and 'Cancel'. The 'Next >' button is highlighted with a yellow border.

Found New Hardware Wizard

Please choose your search and installation options.

☒ Search for the best driver in these locations.

Use the check boxes below to limit or expand the default search, which includes local paths and removable media. The best driver found will be installed.

☐ Search removable media (floppy, CD-ROM...)

☒ Include this location in the search:

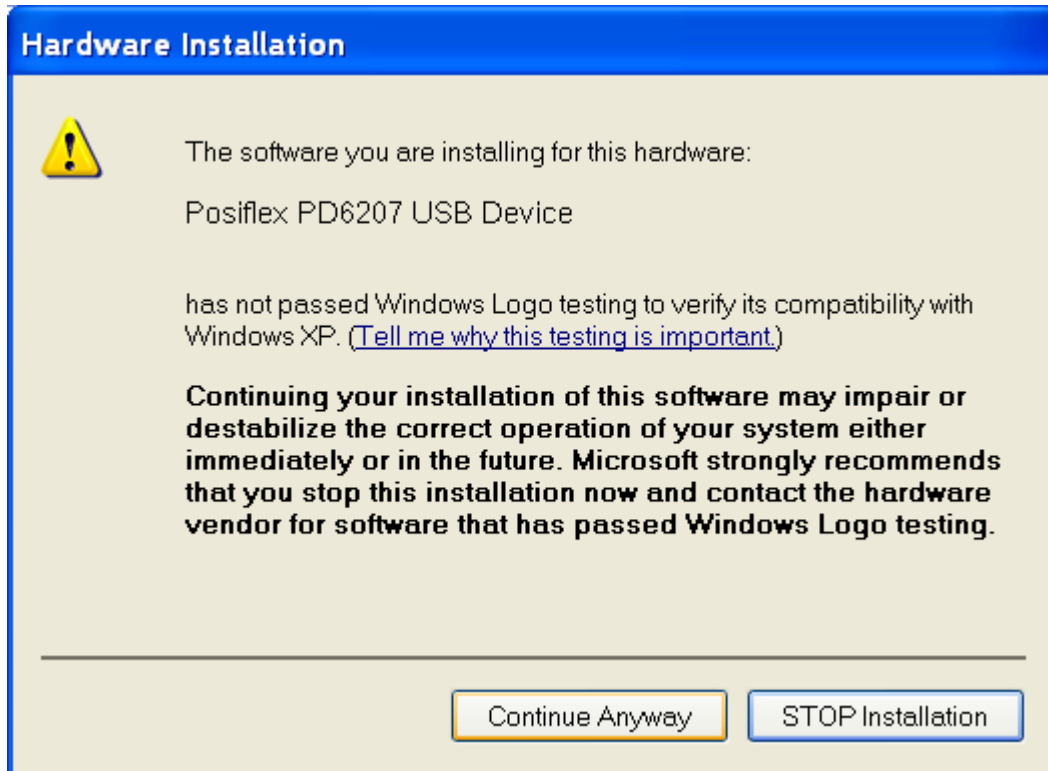
C:\Drivers\ USBPP_VCOM_v510\USBPP_WinXP

☐ Don't search. I will choose the driver to install.

Choose this option to select the device driver from a list. Windows does not guarantee that the driver you choose will be the best match for your hardware.

< Back Next > Cancel

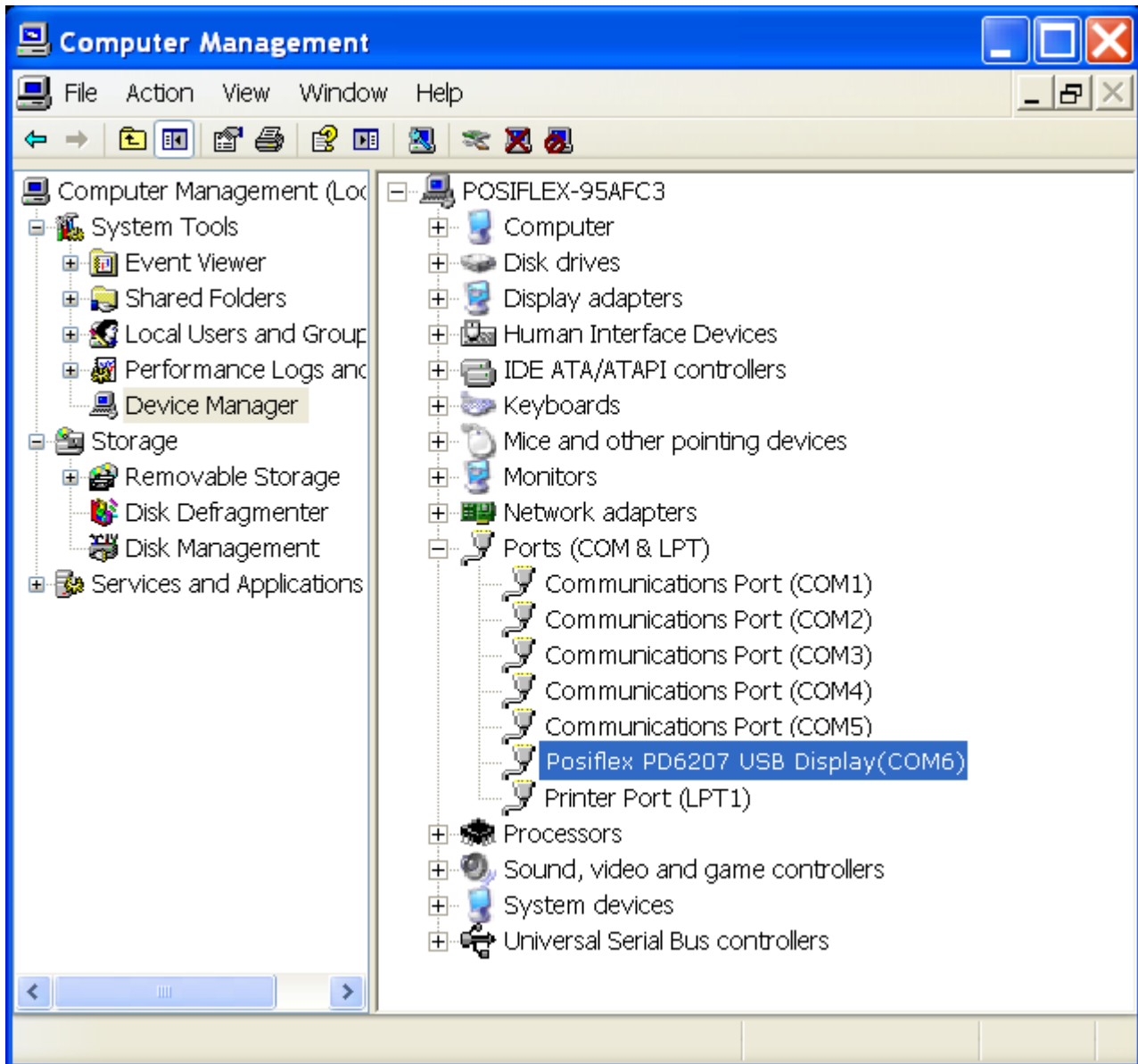
If Windows XP is configured to warn when unsigned (non-WHQL certified) drivers are about to be installed, the following screen will be displayed unless installing a Microsoft WHQL certified driver. Click on **Continue Anyway** to continue with the installation. If Windows XP is configured to ignore file signature warnings, no message will appear.



- Windows should then display a message indicating that the installation was successful. Click **Finish** to complete the installation for the first port of the device.



Open the Device Manager (located in "Control Panel\System" then select the "Hardware" tab and click "Device Manger") and select "Ports (COM & LPT)", the device appears an additional COM port with the label "Posiflex PD6207 USB Display(COM6)".

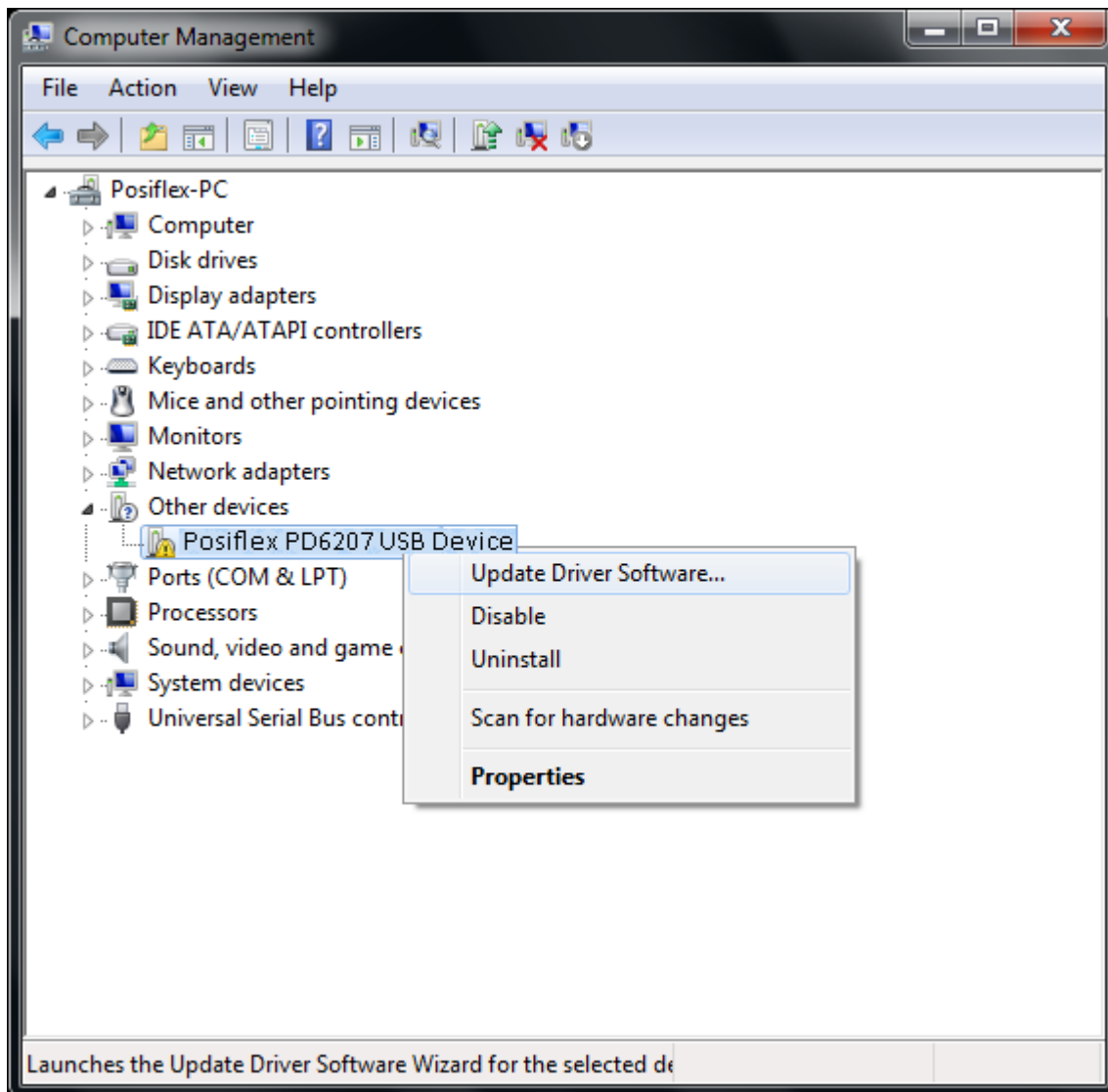


- This driver is to allocate a COM port using information derived from the cable's physical location on USB port. If the other cables are always plugged into the same USB port, then they will appear to the system as the same COM port.
- Limitations
Although this driver can be used to control the number of COM ports created in the system, it cannot prevent the installation of a new USB device for every unique device that is plugged in.

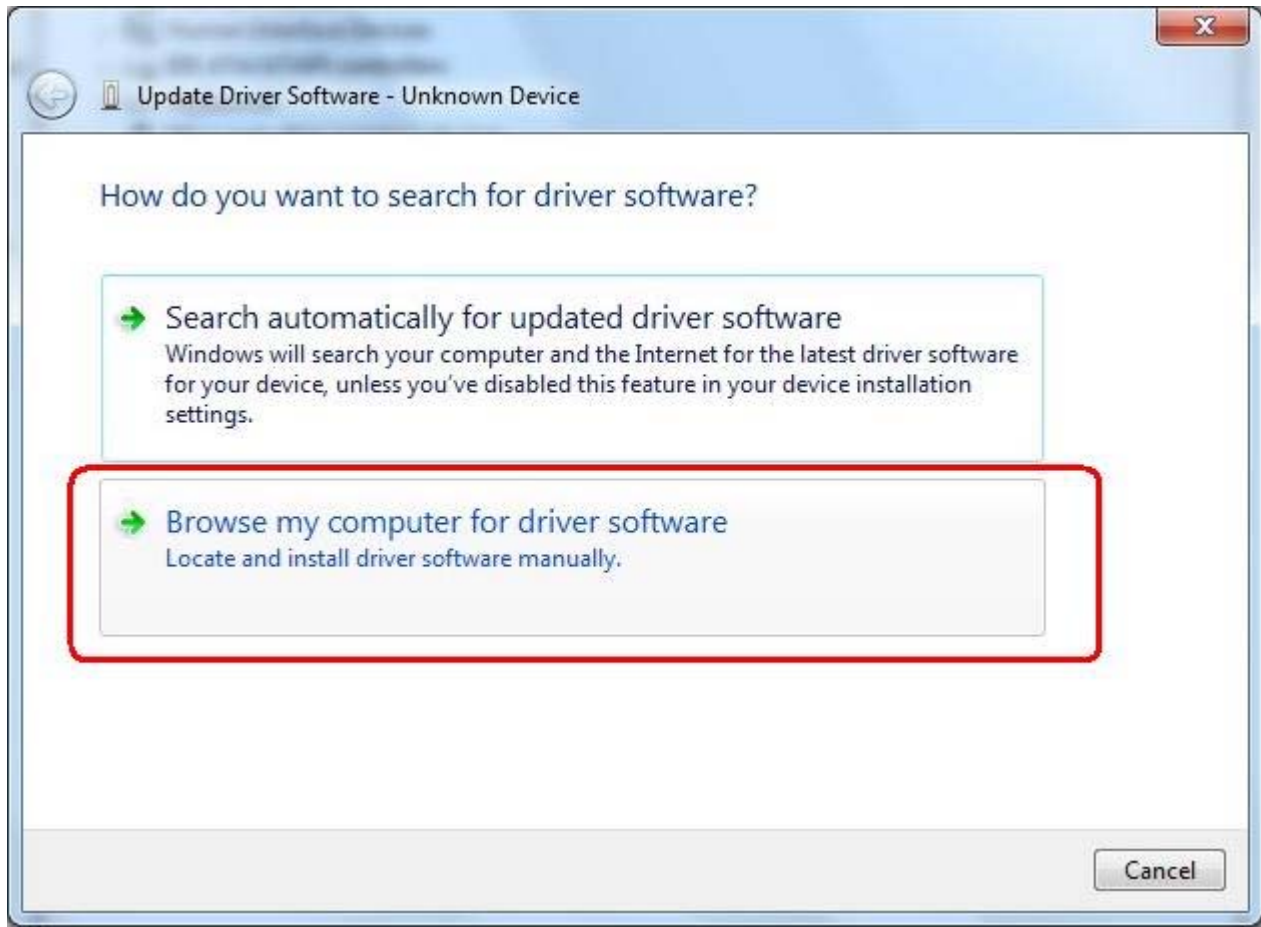
Installing Drivers under Win7 32bit

The steps below are the examples for PD6207.

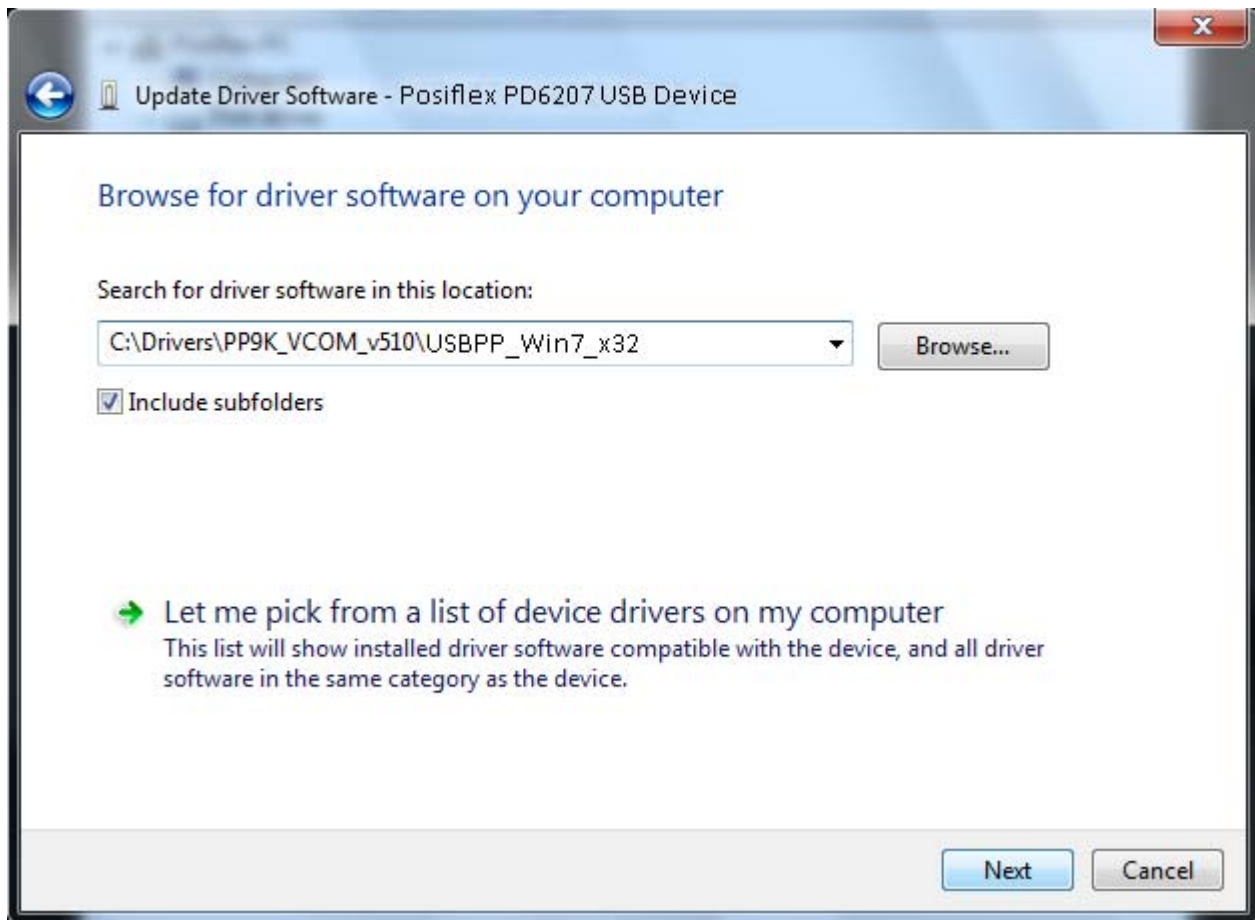
- Right click "Computer" and select "Property" to view the "Device Manager" whether display unknown device or not when you connect the USB Display to USB port on your PC.
- Right click on this "unknown device" and select "Update Driver Software" to continue driver installation.



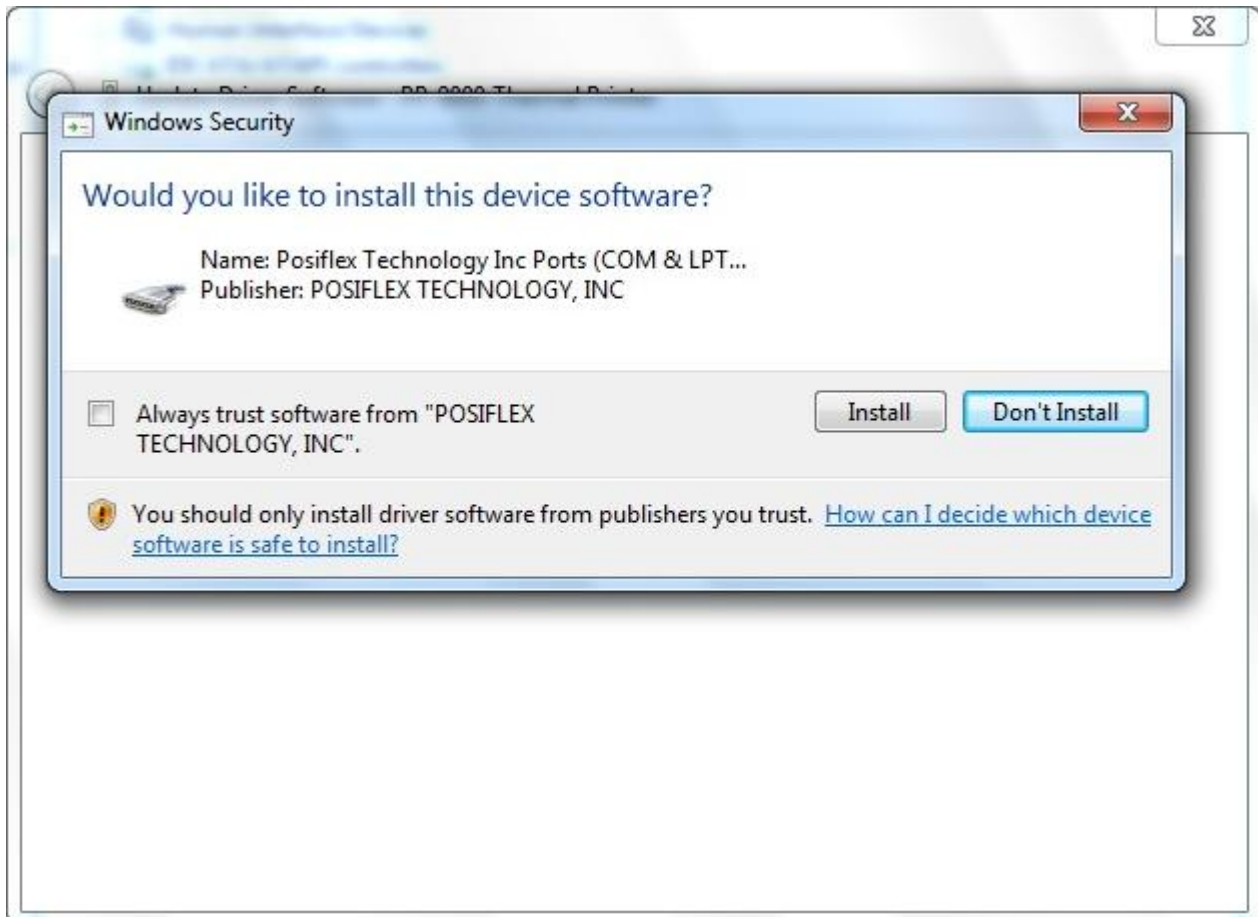
- Click on "Browse my computer for driver software".



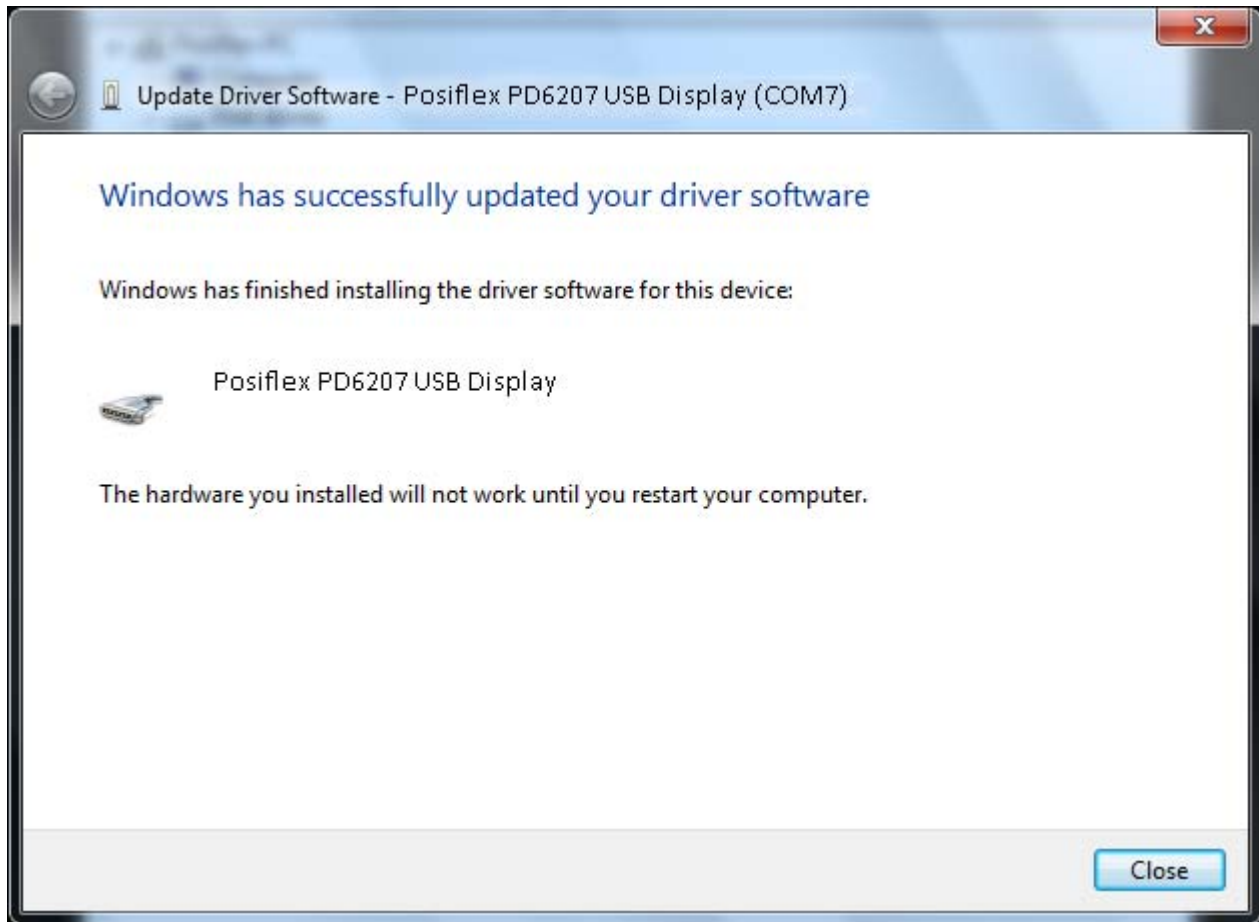
- Click "Browse" to search for driver software.



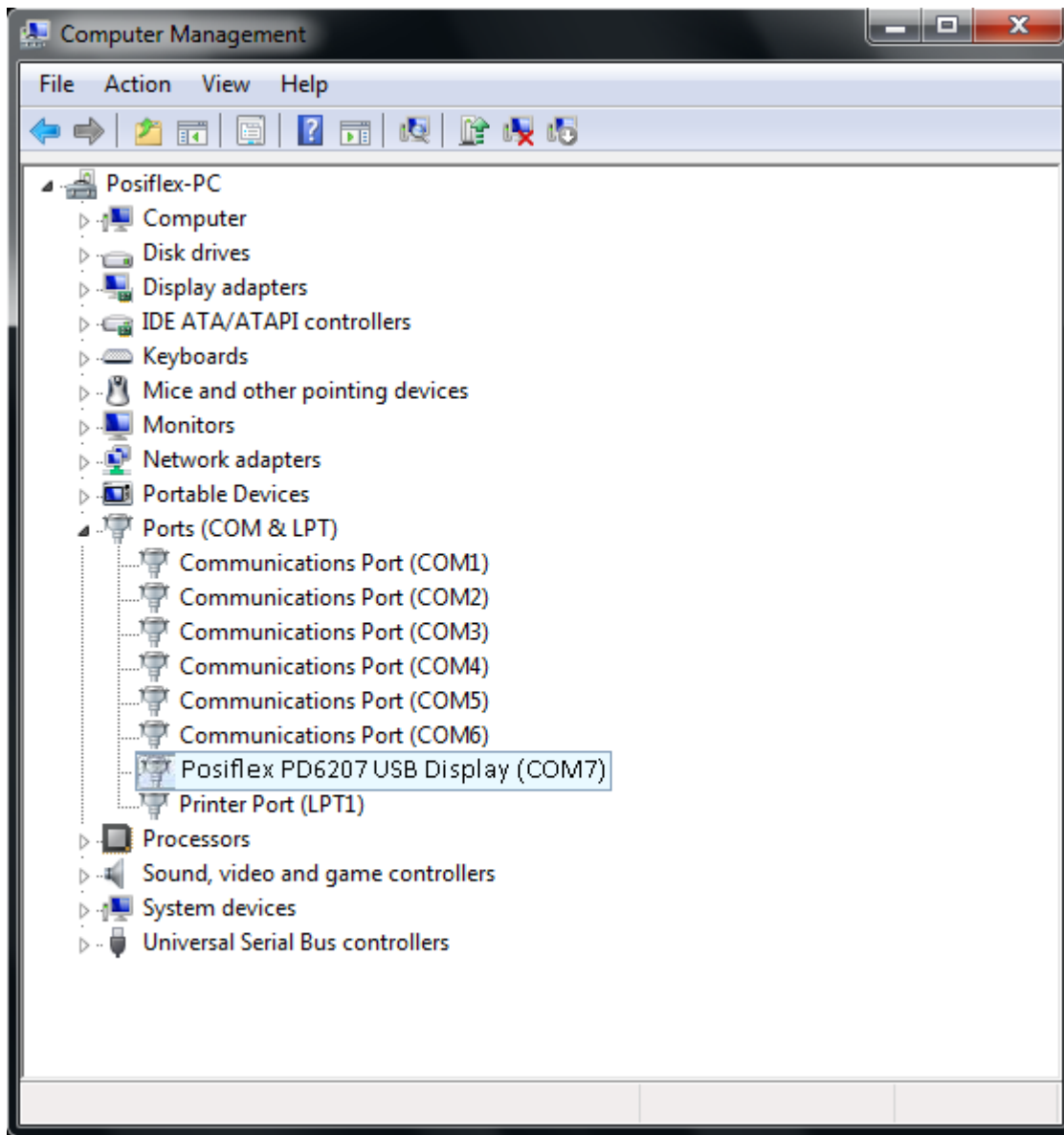
- Click on "Install" to continue with the installation.



- Windows should then display a message indicating that the installation was successful. Click "Finish" to complete the installation for the first port of the device.



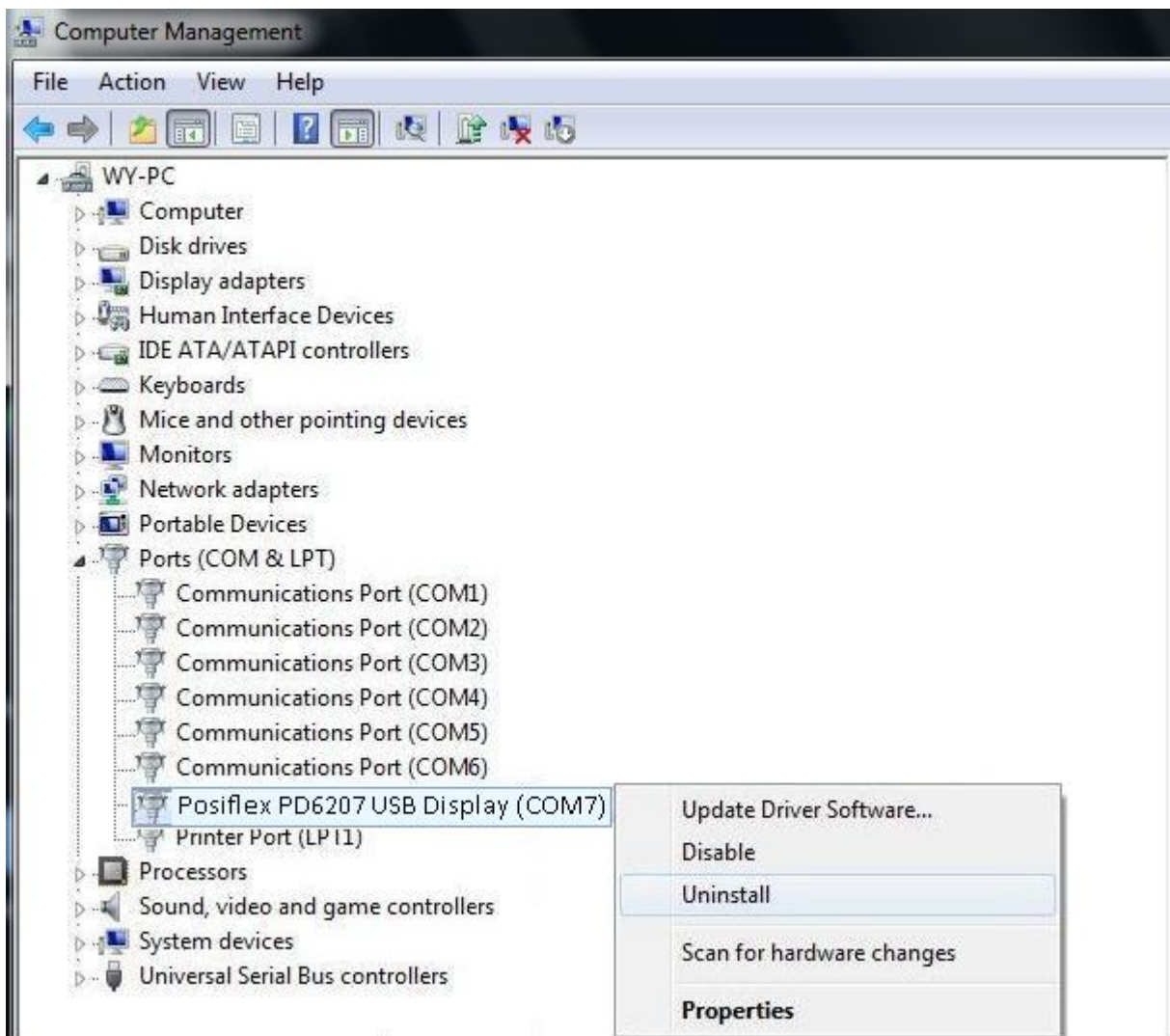
- Open the Device Manager (located in "Control Panel\System" then select the "Hardware" tab and click "Device Manger") and select "Ports (COM & LPT)", the device appears an additional COM port with the label "Posiflex Pd6207 USB Display(COM7)".



Uninstalling Drivers

To uninstall USB Display drivers, follow the instructions below:

- Please connect the USB Display device to PC.
- Open the Device Manager (located in "Control Panel\System" then select the "Hardware" tab and click "Device Manger") and select "Ports (COM & LPT)".
- Then right-click on the virtual COM port of "USB Display" and select "Uninstall" from the menu.
- Please tab "Yes" to confirm to remove USB Display device.



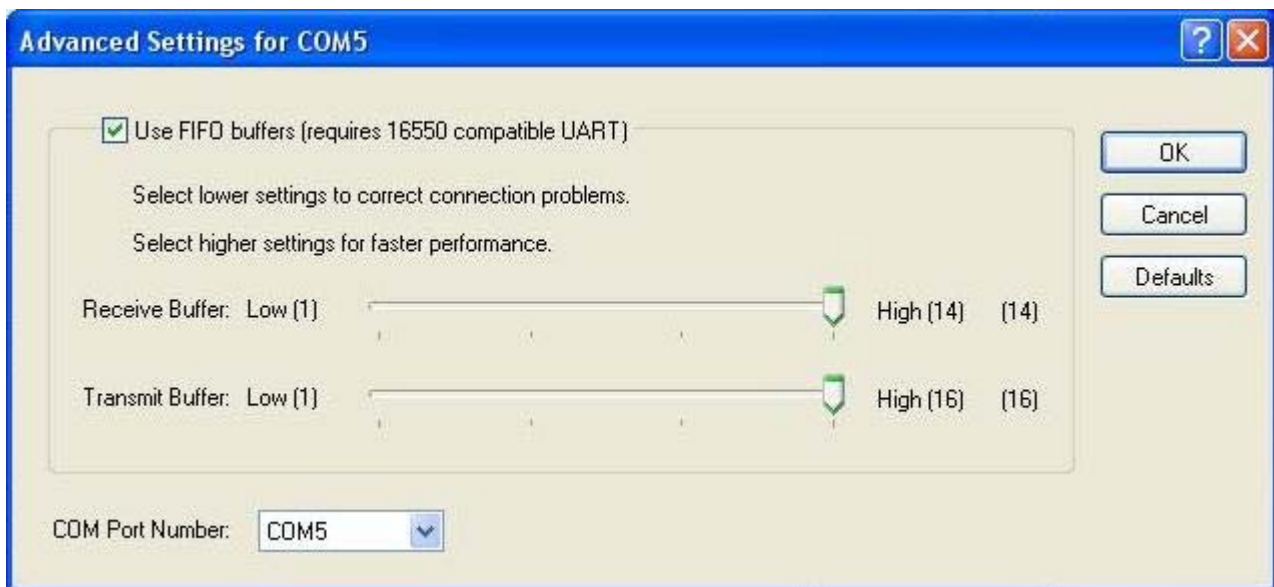
Advanced drivers options

An advanced properties page is available for devices using this driver. To access the advanced properties page in Windows 2000 or Windows XP or Windows 7, go to "Control Panel -> System" then select the "Hardware" tab and click "Device Manager...". Find the USB serial port you want to change the properties of and right-click on it. Select **"Properties"** from the menu then select the **"Port Settings"** tab and click **"Advanced"** button to get the window below.

This page allows configuration of the basic device COM Port Number. To access more advanced settings, click on the "Advanced..." button to display the advanced properties page (shown below).

This page will allow COM port number to be altered:

<WinXP>



<Win7>

